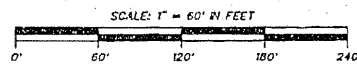
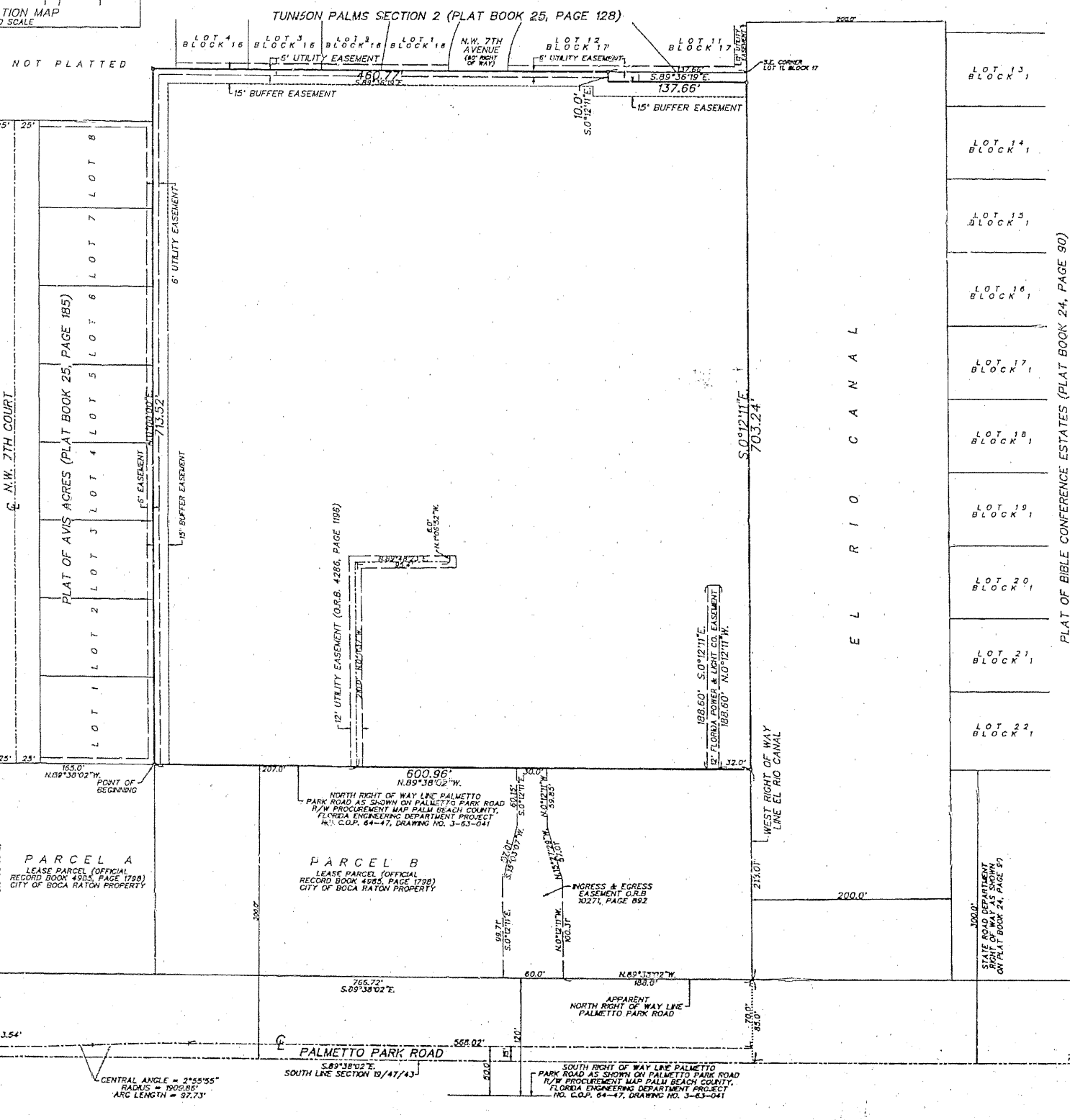


PLAT OF
ST. PAUL EVANGELICAL LUTHERAN CHURCH
 A PLAT OF A PORTION OF SECTION 19, TOWNSHIP 47 SOUTH,
 RANGE 43 EAST, CITY OF BOCA RATON, PALM BEACH COUNTY, FLORIDA

SHEET 2 OF 2



146



LEGEND:
 [Symbol] = SET P.R.M. (PERMANENT REFERENCE MONUMENT)
 THE SOUTH LINE OF SECTION 19/47/43 IS ASSUMED TO BEAR S.89°38'02\"/>

O'BRIEN, SUITER & O'BRIEN, INC.
 LAND SURVEYORS
 CERTIFICATE OF AUTHORIZATION #16353
 SURVEYOR AND MAPPER IN RESPONSIBLE CHARGE: JOHN H. SUITER
 2601 NORTH FEDERAL HIGHWAY, DELRAY BEACH, FLORIDA 33483
 (561) 276-4501 732-3279 FAX 276-2390

DATE	SCALE
FIELD BOOK	ORDER NO.
PAGE NO.	87-2125